

**W** wellion<sup>®</sup>  
*vet*  
**GLUCO CALEA**



**OWNERS GUIDE**



wellion<sup>®</sup>  
*vet*



**Dear WellionVet GLUCO CALEA Owner,**

Thank you for choosing the WellionVet GLUCO CALEA Blood Glucose Monitor System that will help you monitoring the blood sugar levels of your pet. We designed the WellionVet GLUCO CALEA Blood Glucose Monitoring System to be accurate and easy to use.

Your new WellionVet GLUCO CALEA Blood Glucose Monitoring System is designed with convenience and accuracy in mind to make your life easier. To ensure the test results are accurate on every test, we created three unique code chips for the measurement of blood sugar in a cat, a dog or a horse.

All information needed to use and maintain your new meter is included in this manual. Please read it carefully.

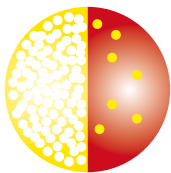
The WellionVet GLUCO CALEA Blood Glucose Monitoring System is a portable battery operated meter intended for use as an aid for persons with diabetic pets and by health care professionals to monitor glucose concentration in capillary whole blood of cats, dogs and horses.

If you have questions or simply want more information, please call your veterinarian or visit our website at [www.wellionvet.at](http://www.wellionvet.at).



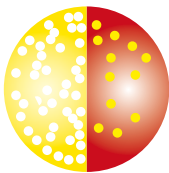
## WHY A PARTICULAR BLOOD GLUCOSE METER FOR MY CAT, DOG OR HORSE?

Animals and humans have a different composition of blood, especially the distribution of the glucose in blood plasma and whole blood is significantly different. In animals the concentration of glucose in plasma is much higher than in humans:



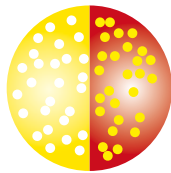
CAT

About 93% of the glucose is located in plasma and 7% of the glucose in the red blood cells



DOG

About 87.5% of the glucose is located in plasma and 12.5% of the glucose in the red blood cells



HUMAN

About 58% of the glucose is located in plasma and 42% of the glucose in the red blood cells

If you use a meter for human blood on a cat, dog or horse, it may result in inaccurate readings and underestimation of the blood glucose value.

The human meter is especially calibrated on human blood and will calculate the accurate human glucose result. But this is not the same value as it would be for your cat, dog or horse - to receive an accurate value for your pet you must use a blood glucose meter developed especially for animals.

Your WellionVet GLUCO CALEA meter is calibrated especially for the blood of cats, dogs and horses.

Testing your pet's blood glucose at home will help to improve the diabetes therapy.

	WellionVet GLUCO CALEA pet meter	Human meter
Human blood glucose result	N/A	accurate
Cat blood glucose result	precise when coded for cat	can show a false, low result
Dog blood glucose result	precise when coded for dog	can show a false, low result
Horse blood glucose result	precise when coded for horse	can show a false, low result



A cat with glucose levels below 250 mg/dL (13,8 mmol/l) and a nadir of 80-150 mg/dL (4,4-8,3 mmol/l) is considered to be well controlled.\*



A dog with glucose levels below 180 mg/dL (10 mmol/l) and a nadir of 80-150 mg/dL (4,4-8,3 mmol/l) is considered to be well controlled.\*



Contact a veterinary surgeon and follow his or her treatment advice about the target range for the horse.

\*Priv. Doz. Dr. med. vet. Florian Zeugswetter, University of Veterinary Medicine Vienna

When your pet is relaxed and able to follow its routine, the measured blood glucose results will be more accurate. Your veterinarian can use the consistent data of the measurements at home together with the measurements in the vet clinic to optimise the treatment of your pet.

It is important to motivate the animals by means of positive reinforcement like:

- Perform the blood glucose testing under calm and relaxed conditions
- Feed a "Goodie" as a reward
- Use a safetylancet that only gives a silent "click"

## UNDERSTANDING YOUR WELLIONVET GLUCO CALEA BLOOD GLUCOSE KIT

The WellionVet GLUCO CALEA Blood Glucose Monitoring System kit includes the following items:

WellionVet GLUCO CALEA blood glucose meter

10 Wellion Safety Lancets 23G

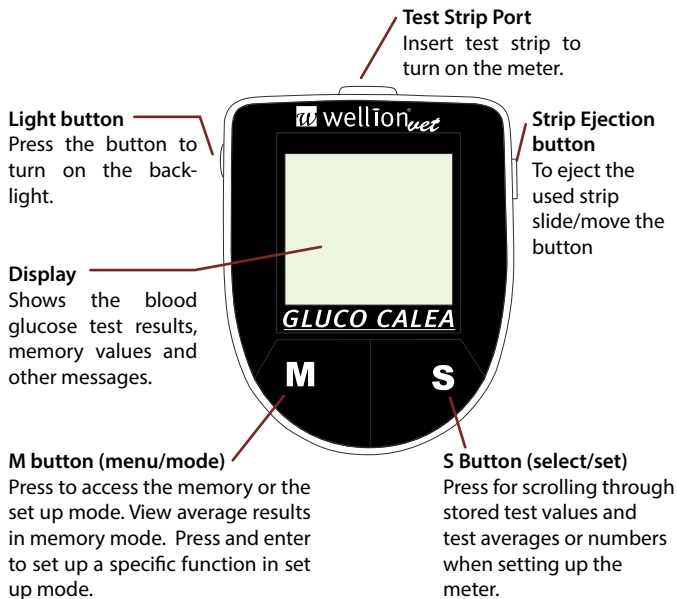
Compact Pouch

User guide

WellionVet GLUCO CALEA test strips can be purchased separately.

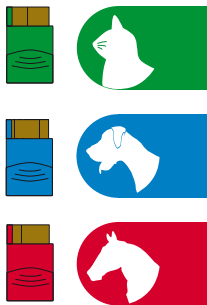


## The WellionVet GLUCO CALEA meter



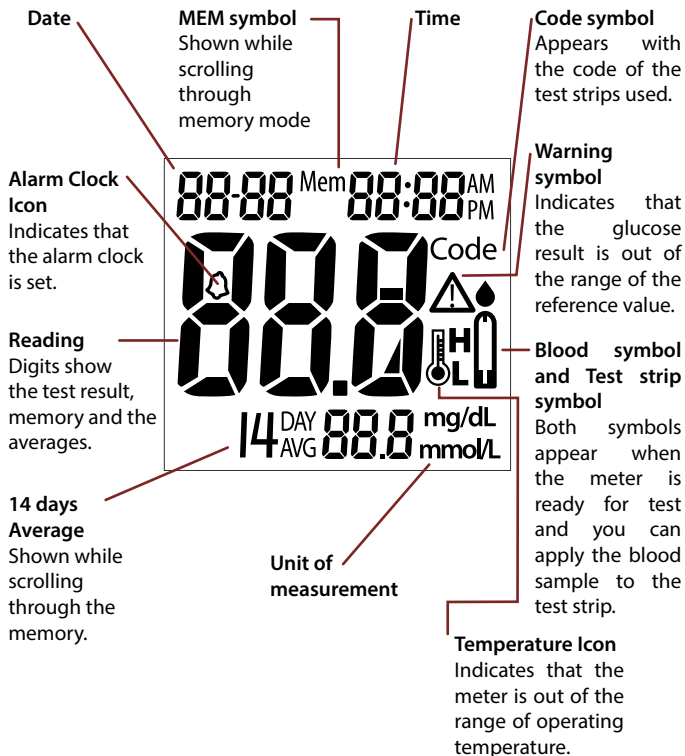
**Battery compartment**  
Holds a 3-Volt lithium battery (CR-2032).

**Unique code chip**  
Insert the correct code chip for your pet into the code chip port. There are three code chips in the test strip package for the measurement in a cat, a dog or a horse.





# The WellionVet GLUCO CALEA meter display



## The WellionVet GLUCO CALEA Blood Glucose Test Strip

**Sampling End**  
Apply blood here



**Contact Points**  
Insert this end into the test strip port on the meter.

**Control Window**

The little window allows you to check if there is enough blood sipped into the test strip.

The WellionVet GLUCO CALEA Test Strips are glucose specific, biosensor-based test strips that can test glucose in capillary whole blood of animals (cats, dogs and horses) in only a few seconds and require a very little blood sample.

To ensure the test results are accurate on every test, we created three unique code chips for the measurement in a cat, a dog or a horse (Colourcoding).



This feature eliminates errors in testing caused by incorrect calibration. The test result is plasma referenced for easy comparison to lab results. Please make sure that the control window of the test strip is completely filled with the blood sample in order to get an accurate and meaningful result.

## IMPORTANT:

- Be sure to use only the WellionVet GLUCO CALEA Blood Glucose Test Strip with the WellionVet GLUCO CALEA Blood Glucose Meter.
- The WellionVet GLUCO CALEA Blood Glucose Test Strips are sensitive to moisture and light, it is important to close the vial cap of the test strip bottle tightly after every use. DO NOT leave any test strips outside the bottle while not in use.

## The WellionVet GLUCO CALEA Code Chips



For the WellionVet GLUCO CALEA we have three unique code chips for the measurement in a cat, a dog or a horse.



Always use the correct code chip delivered with every test strip box to ensure your meter provides accurate test results to optimise the diabetes therapy of your pet.



Please note that the meter will not start the measurement process without a code card. If you are starting a new strip vial, you will have to use the appropriate code chip for the species.

## Coding the meter

Insert the correct code chip into the chip slot properly. The meter will automatically turn on showing all its segments to indicate that the meter is performing properly.



Compare the code number on the display with the code number on the code chip and on the test strip vial you are using. If the code is identical the meter is ready for a correct measurement. Now insert a WellionVet GLUCO CALEA test strip to start with the measurement.



## PERFORMING A BLOOD GLUCOSE TEST

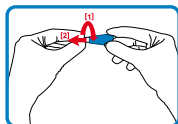
Take a WellionVet GLUCO CALEA Test Strip out from the test strip bottle and close the bottle immediately.

Insert the WellionVet GLUCO CALEA test strip into the strip port. A beep will indicate the correct placement of the test strip and the code number appears followed by a drop symbol, meaning that the meter is ready to get the blood sample.

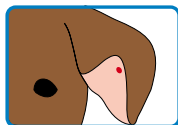
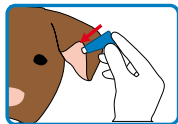
Twist the white safety cap of the lancet and pull it off. Hold and press the



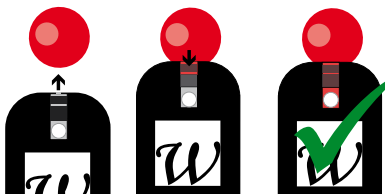
unlocked Wellion Safetylancet firmly to the skin to release the lancet and obtain a drop of blood (How to choose the best puncture site - see next chapter).



Approach the test strip to the blood drop and touch it in a right angle. Blood is automatically drawn into the test strip. Let the test strip sip in blood until the white circle in the control window is surrounded with blood - see illustration. The meter counts down and after 5 seconds your glucose testing result will appear on the meter display screen. The meter will shut off automatically after 3 minutes, if no further tests are performed.



You can push the eject button to remove the test strip. Discard the used test strip into proper wastebasket.



The Wellion Safetylancets are disposable products that ensure a safe and gentle extraction of capillary blood and thereby minimise the potential pain for the animal during penetration by minimising the vibrations and an ultra sharp lancet. The handling with a lancet and lancing device is not necessary, as the Wellion Safetylancet



is both in one. Dispose the lancet in a suitable waste container.

#### IMPORTANT:

- Check the expiration date printed on the test strip bottle and its package. Do not use expired test strips.
- Use each test strip immediately after removing it from the bottle.
- Do not use wet or damaged test strips.
- Keep away from direct sunlight and heat. Store the test strip bottle in a dry, cool place.

### How to choose the best puncture site

Consult your veterinary doctor to get recommendations for the best sampling method and information on preferred puncture site.

To obtain a capillary blood sample you can choose the following sites:

- The ear – all species
- Paw (cats and dogs)
- Leg callus (dogs)
- Inner lip (dogs)



Sometimes it can be difficult to get a blood sample. Here are some recommendations how to improve the procedure:

- Warming the puncture site by means of a warm cloth
- Gently rubbing of the puncture site

Sometimes it is useful to puncture twice very nearby to form one blood drop out of the punctures.

It is important to motivate the animals by means of positive reinforcement like:

- Perform the blood glucose testing under calm and relaxed conditions
- Feed a "Goodie" as a reward
- Use a safetylancets that only gives a silent "click"



## VIEWING THE METER MEMORY

Press the M button once to turn on the WellionVet GLUCO CALEA meter. Date and time will appear first.

By pressing the S button the meter will show "7-day-average", "14-day-average", and "30-day-average" and then continue with the most recent test result. If it has 14-day average result, it will show under the screen at the same time.

Continue pressing the S button to scroll through the stored test results. „000“ will appear at the end of the memory or if there are no test results in the memory.

If the memory already has 300 test results, adding a new test result will cause the oldest one to be deleted.

When there are no daily average data available, the display screen will show no average value.





# SETTING YOUR WELLIONVET GLUCO CALEA METER

## Changing the Battery

Remove the battery cover and insert new battery according to the direction found on inside the battery compartment. Slide the battery cover back into place.

Current date and time information will be memorised by the meter for approximately 1 minute. If the batteries are inserted after 1 minute, meter may prompt to verify the current date and time.

The stored results and settings will not be erased when the batteries are being changed.

## Setting the clock

Press and hold the M (menu/mode) button to enter date and time setting. The time format (12h/24h) will flash. Press the S button to select the correct time format. Press the M button to confirm your choice and advance to set the year.

Press the S button to select the correct year. Press the M button to confirm your setting and continue to set the month.

Repeat this procedure to set one after another time format, year, month, day, hour and minute.

Press the M button to continue with the alarm setting.

## Setting the alarm

Press the M button to set Alarm No 1. Press the S button to change the hour, to confirm your setting press the M button. Then press the S button to change the minutes, to confirm your choice press the M button.

To move on to set Alarm No 2 press again the M button. Repeat this procedure to set all 4 available alarms individually.

## Setting the hypo- / hyper-warning

To change the level for the hyper-warning press the S button until you reached the desired warning level for a hyperglycaemia. Press M button to confirm your choice and move on to the setting for hypo-warning.

To change the level for the hypo-warning press the S button until you reached the desired warning level for a hypoglycaemia. Press M button to confirm your choice and finish the settings on the meter. The meter will turn off automatically.

## CARE OF THE METER

Taking care for your WellionVet GLUCO CALEA Meter is easy. Follow these simple guidelines to keep your meter working properly.

### Cleaning the Meter

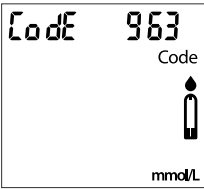


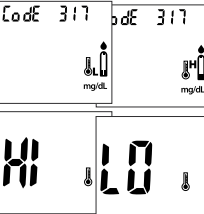
- If the meter gets dirty, use a moist (NOT WET) lint-free cloth dampened with a mild detergent.
- Do not get water inside the WellionVet GLUCO CALEA Meter. Never immerse the meter or hold it under running water.
- Do not use glass or household cleaners on the meter.
- Do not try to clean the test strip holder.

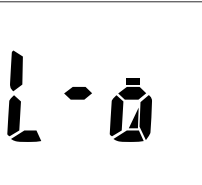
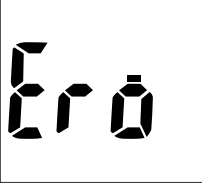
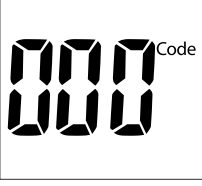


### Storage and Precautions

- Handle the Meter with care - severe shock, such as dropping the meter, could damage the electronics.
- The meter and test strips are designed to be used within the temperature ranges between 10°C to 40°C.
- Avoid leaving the meter in extremely hot or cold place, such as near a heat source or in an extremely hot or cold car.
- Do not store or use the meter or test strips in high humidity levels, such as bathroom or kitchen.
- Always close bottle cap immediately after removing a test strip and make sure it's closed tightly.
- Do not take the meter apart. Doing so will void the warranty. If there are technical problems or questions, call our authorised dealer for assistance.



## DISPLAY MESSAGES

Display	What it means	What to do
	Meter is ready to make a measurement	Apply blood sample to test strip
	Test result is higher than 600 mg/dL (33,3 mmol/L)	Wash and dry the puncture site and repeat the test using a new test strip. If the result is still HI, contact your veterinarian.
	Test result is lower than 20 mg/dL (1,1 mmol/L)	Wash and dry the puncture site and repeat the test using a new test strip. Treat low blood sugar. If the result is still LO, contact your veterinarian.
	Testing has been performed outside of operating temperature	Move the meter into an area that is between 10°C to 40°C, and allow 10 to 15 minutes for it to reach the new temperature.

	<p>Battery is low, meter will allow about 50 more measurements</p>	<p>Change the battery</p>
	<p>Battery is too low for further measurements</p>	
	<p>This warning will appear if the meter has not been encoded.</p>	<p>Insert correct code chip for your pet:  cat = green,  dog = blue,  horse = red</p>
	<p>If the Meter display shows the warning marker this means that your results are above or below your chosen hyper or hypo limit</p>	<p>Wash and dry the puncture site and repeat the test using a new test strip.</p>
		

	<p>Problem with test strip</p>	<p>Try again with new test strip</p>
	<p>Problem with meter</p>	<p>Check the meter again with the Code Chip. If the problem persists, contact Customer Service for help.</p>
	<p>Problem with coding of the meter</p>	<p>Compare the code number on the display with the code number on the test strip vial you are using - they should match.</p>
	<p>The alarm you have set is ringing to remind you of doing the blood glucose test.</p>	<p>Press a button to shut off the alarm.</p>

## SPECIFICATIONS

Test Strips:	WellionVet GLUCO CALEA Blood Glucose Test Strips and WellionVet GLUCO CALEA code chips
Test Range:	20-600 mg/dL (1,1 - 33,3 mmol/L)
Calibration:	Plasma
Test Time:	5 seconds
Sample Size:	0,5 microliter
Hematocrit Range:	35 - 55%
Display Type:	LCD screen
Memory:	300 blood test results with date and time
Averages:	7, 14, 30 days averaging
Dimension:	81 x 62 x 18 mm
Weight:	56g (incl. batteries)
Battery:	3-Volt lithium battery (CR-2032)
Battery Life:	1000 tests of continuous use or 1 year
Automatic Power-off:	After 3 minutes of nonuse
Operating Temperature:	10°C to 40°C (50°F - 104°F)
Relative Humidity:	< 90% RH
Storage Condition:	Meter at 0°C - +70°C Test Strips at 4°C - 30°C



For additional information, refer to the WellionVet GLUCO CALEA Test Strip insert.

## SYMBOLS



(EXP) Expiration date (use by last day of month)



(LOT) Batch Code

Operation



Temperature Limitations



Consult Instructions for Use



Caution, consult accompanying documents



Catalogue number



Keep away from sunlight/direct light



Do not reuse



Do not use if package is damaged



Manufacturer

## MANUFACTURER'S WARRANTY

The producer warrants the WellionVet GLUCO CALEA blood glucose meter against defects in materials and workmanship for a period of two years from the date of purchase. The warranty does not apply if the instrument has been misused, poorly maintained or is tampered with.

Liability under this warranty is limited to the repair of defective parts or - at the discretion of the producer - to the replacement of the instrument. The right to rescind the purchase agreement exists only if the replacement is also found to be defective. Claims other than these will not be dealt with.

The warranty period is not to be extended by any claim made under this warranty.



# wellion<sup>®</sup>*vet* ***GLUCO CALEA***

---

© MED TRUST, WellionVet and GLUCO CALEA are registered trademarks.  
WVET732EN RevB 03/2017



MED TRUST Handelsges.m.b.H.  
Gewerbepark 10  
7221 Marz  
AUSTRIA  
[www.medtrust.at](http://www.medtrust.at)  
[www.wellion.at](http://www.wellion.at)

